

Set lletres

INTRO

D⁵ G(sus2) A(sus4) D⁵ G(sus2) A(sus4)

5 VI D/F# G(sus2) A(sus4) D/F# G(sus2) A(add9) F#7/A# Bm(add9)

9 G(sus2) D6/F# A(add2) G(sus2) D6/F# Bbmaj7 A

13 D/F# G(sus2) A(sus4) D/F# G(sus2) A(add9) F#7/A# Bm(add9)

mitja octava més agut?
una mica més de farciment rítmic?

17 G(sus2) D6/F# A(add2) G(sus2) A(sus4)

PRE-CH

21 Bm A(sus4) G(sus2) G(sus2) A(sus4)

25 CH G(add2) A(add2) G(add9)/B Bm A

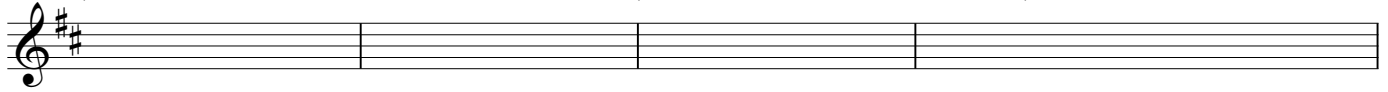
29 G(add2) A(add2) G(add9)/B A(sus4) A

INTRO

34 D⁵ G(sus2) A(sus4) D⁵ G(sus2) A(sus4)

V1

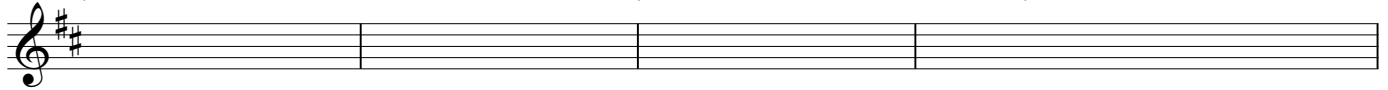
38 D/F# G(sus2) A(sus4) D/F# G(sus2) A(add9) F#7/A# Bm(add9)



42 G(sus2) D6/F# A(add2) G(sus2) D6/F# Bbmaj7 A



46 D/F# G(sus2) A(sus4) D/F# G(sus2) A(add9) F#7/A# Bm(add9)

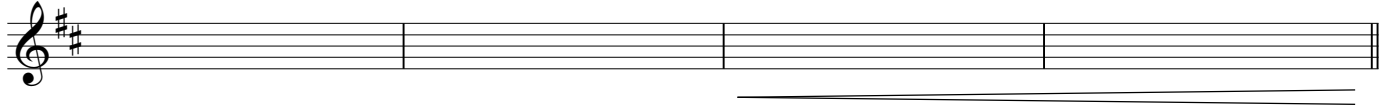


50 G(sus2) D6/F# A(add2) G(sus2) A(sus4)



PRE-CH 2

54 Bm A(sus4) G(sus2) A(sus4)



CH

58 G(add2) A(add2) G(add9)/B Bm A



62 G(add2) A(add2) G(add9)/B A(sus4)



CH

66 G(add2) A(add2) G(add9)/B Bm A G(add2) A(add2)



OUTRO

72 G(add2) A(add2) G(add9)/B A/C# G(sus2)

